



Title Plan - LT 482481

Survey Number LT 482481
Surveyor Reference E18316 Stage 6
Surveyor Kevin Martin Hayes
Survey Firm Davie Lovell-Smith Ltd
Surveyor Declaration

Survey Details

Dataset Description Lots 73 to 80, 104 to 118, 608, 703 and 817 being subdivision of Lot 703 DP 476690
Status Initiated
Land District Canterbury
Survey Class Class A
Submitted Date
Survey Approval Date
Deposit Date

Territorial Authorities

Selwyn District

Comprised In

CT 659294

Created Parcels

Parcels	Parcel Intent	Area	CT Reference
Lot 73 Deposited Plan 482481	Fee Simple Title	0.0635 Ha	686152
Lot 74 Deposited Plan 482481	Fee Simple Title	0.0601 Ha	686153
Lot 75 Deposited Plan 482481	Fee Simple Title	0.0601 Ha	686154
Lot 76 Deposited Plan 482481	Fee Simple Title	0.0601 Ha	686155
Lot 77 Deposited Plan 482481	Fee Simple Title	0.0601 Ha	686156
Lot 78 Deposited Plan 482481	Fee Simple Title	0.0600 Ha	686157
Lot 79 Deposited Plan 482481	Fee Simple Title	0.0550 Ha	686158
Lot 80 Deposited Plan 482481	Fee Simple Title	0.0607 Ha	686159
Lot 104 Deposited Plan 482481	Fee Simple Title	0.0601 Ha	686160
Lot 105 Deposited Plan 482481	Fee Simple Title	0.0600 Ha	686161
Lot 106 Deposited Plan 482481	Fee Simple Title	0.0702 Ha	686162
Lot 107 Deposited Plan 482481	Fee Simple Title	0.0624 Ha	686163
Lot 108 Deposited Plan 482481	Fee Simple Title	0.0601 Ha	686164
Lot 109 Deposited Plan 482481	Fee Simple Title	0.0601 Ha	686165
Lot 110 Deposited Plan 482481	Fee Simple Title	0.0601 Ha	686166
Lot 111 Deposited Plan 482481	Fee Simple Title	0.0664 Ha	686167
Lot 112 Deposited Plan 482481	Fee Simple Title	0.0606 Ha	686168
Lot 113 Deposited Plan 482481	Fee Simple Title	0.0608 Ha	686169
Lot 114 Deposited Plan 482481	Fee Simple Title	0.0660 Ha	686170
Lot 115 Deposited Plan 482481	Fee Simple Title	0.0506 Ha	686171
Lot 116 Deposited Plan 482481	Fee Simple Title	0.0504 Ha	686172
Lot 117 Deposited Plan 482481	Fee Simple Title	0.0504 Ha	686173
Lot 118 Deposited Plan 482481	Fee Simple Title	0.0504 Ha	686174



Title Plan - LT 482481

Created Parcels

Parcels	Parcel Intent	Area	CT Reference
Lot 608 Deposited Plan 482481	Vesting on Deposit for Recreation Reserve (Territorial Authority)	0.0277 Ha	686175
Lot 703 Deposited Plan 482481	Fee Simple Title	71.6108 Ha	686176
Lot 817 Deposited Plan 482481	Vesting on Deposit for Road	0.4831 Ha	
Area A Deposited Plan 482481	Easement		
Area B Deposited Plan 482481	Easement		
Area G Deposited Plan 482481	Easement		
Area H Deposited Plan 482481	Easement		
Area I Deposited Plan 482481	Easement		
Total Area		<hr/> 73.4898 Ha	



DAVIE LOVELL·SMITH

PLANNING SURVEYING ENGINEERING

Davie, Lovell-Smith Ltd
116 Wrights Road,
PO Box 679, Christchurch 1,
New Zealand
Telephone (03) 379-0793,
E-mail: office@dls.co.nz

Our Ref: E18316

D.P.482481

SCHEDULE OF EASEMENTS IN GROSS

Purpose	Servient Tenement	Shown	Grantee
Right to convey telecommunications and computer media in gross.	Lot 608 Lot 106	A B	Enable Networks Limited

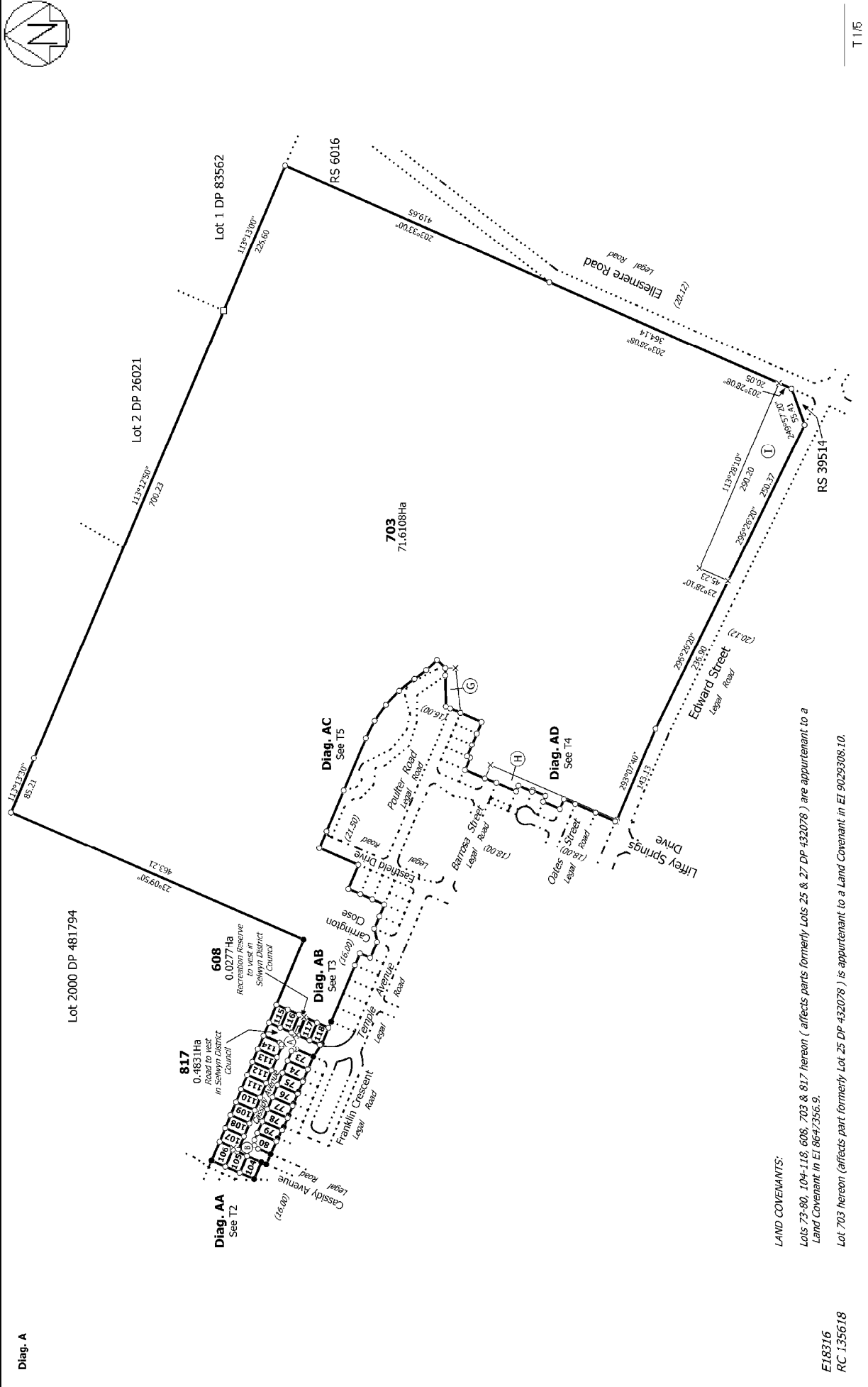
SCHEDULE OF EXISTING EASEMENTS

Purpose	Servient Tenement	Shown	Document
Right to drain water in gross.	Lot 703 Lot 703	G & I H	EI 9370643.10 EI 9672810.8

LAND COVENANTS

Lots 73-80, 104-118, 608, 703 & 817 hereon (affects parts formerly Lots 25 & 27 DP 432078) are appurtenant to a Land Covenant in EI 8647356.9.

Lot 703 hereon (affects part formerly Lot 25 DP 432078) is appurtenant to a Land Covenant in EI 9029308.10



Diag. A

Lot 2000 DP 481794

Lot 2 DP 26021

Lot 1 DP 83562

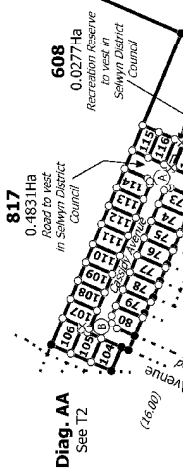
RS 6016

703
71.6108Ha

Ellesmere Road
Legal Road

Edward Street
Legal Road

RS 39514



Diag. AA
See T2

817
0.4831Ha
Road to vest
in Selwyn District
Council

608
0.0277Ha
Recreation Reserve
to vest in
Selwyn District
Council

Diag. AB
See T3

Diag. AC
See T5

Diag. AD
See T4

LAND COVENANTS:

Lots 73-80, 104-118, 608, 703 & 817 hereon (affects parts formerly Lots 25 & 27 DP 432078) are appurtenant to a Land Covenant in EI 8647356.9.

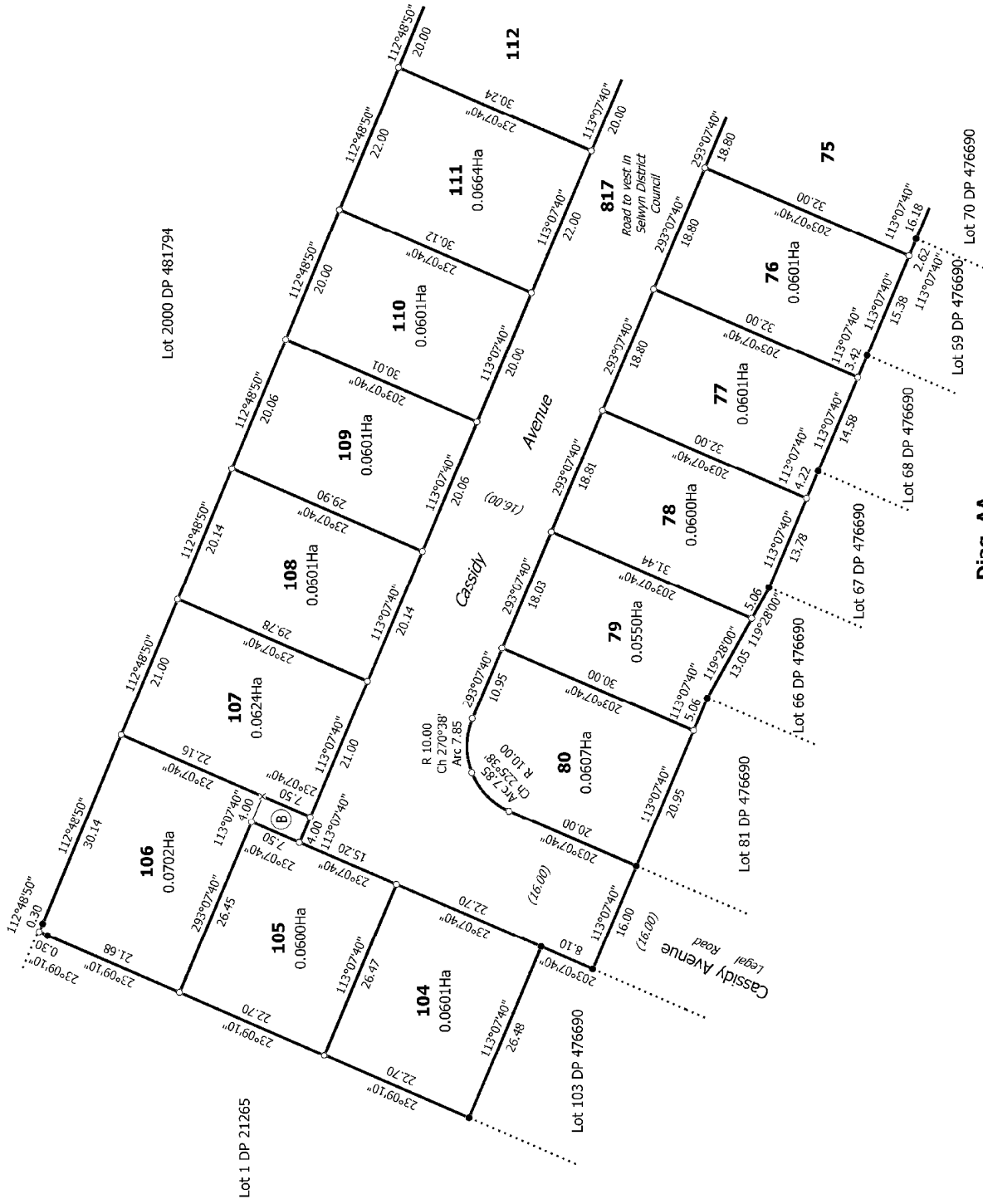
Lot 703 hereon (affects part formerly Lot 25 DP 432078) is appurtenant to a Land Covenant in EI 9029308.10.

E18316

RC 135618

T 115

Land District: Canterbury	Title Plan LT 482481 DRAFT
Digitally Generated Plan Generated on: 20/03/2015 06:55:am Page 4 of 8	Surveyor: Kevin Martin Hayes Firm: Davie Lovell-Smith Ltd
Lots 73 to 80, 104 to 118, 608, 703 and 817 being subdivision of Lot 703 DP 476690	



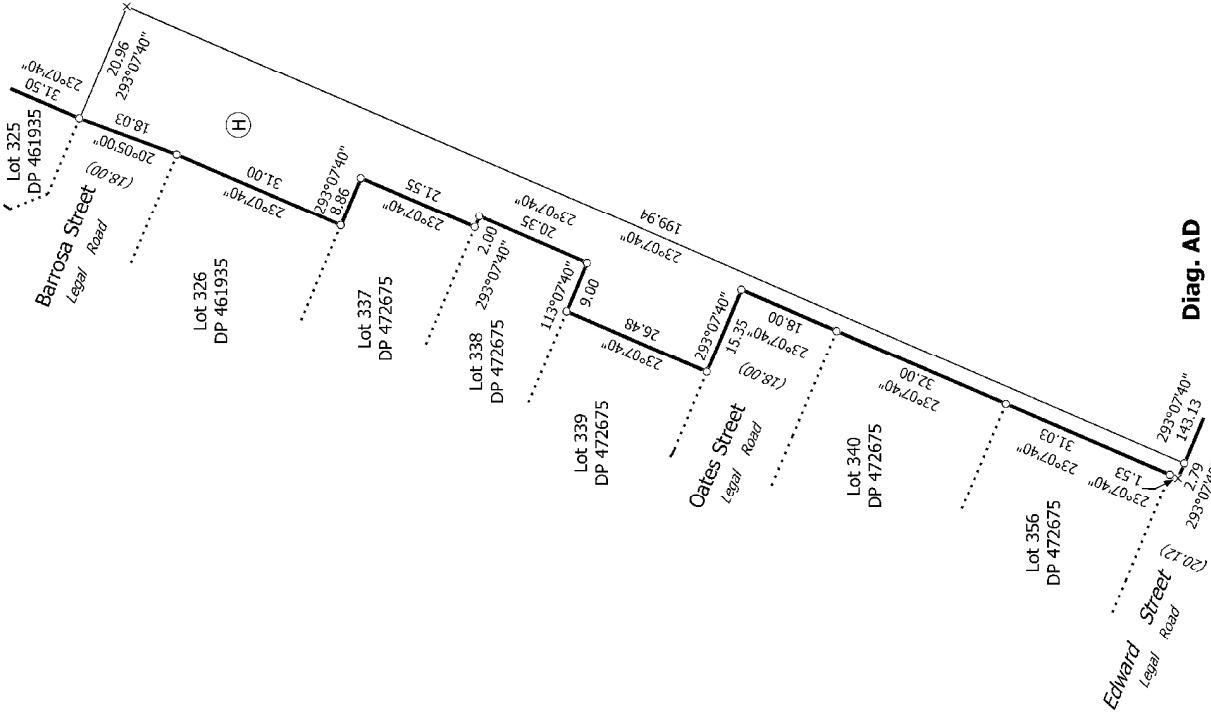
Diag. AA

<p>Land District: Canterbury</p> <p>Digitally Generated Plan</p> <p>Generated on: 20/03/2015 06:55am Page 5 of 8</p>	<p>Lots 73 to 80, 104 to 118, 608, 703 and 817 being subdivision of Lot 703 DP 476690</p> <p>Surveyor: Kevin Martin Hayes Firm: Davie Lovell-Smith Ltd</p>	<p>Title Plan LT 482481 DRAFT</p> <p>T 2/5</p>
---	---	---



Diag. AB

<p>Land District: Canterbury</p> <p>Digitally Generated Plan</p> <p>Generated on: 20/03/2015 06:55am Page 6 of 8</p>	<p>Surveyor: Kevin Martin Hayes</p> <p>Firm: Davie Lovell-Smith Ltd</p>	<p>Title Plan</p> <p>LT 482481</p> <p>DRAFT</p>
<p>Lots 73 to 80, 104 to 118, 608, 703 and 817 being subdivision of Lot 703 DP 476690</p>		



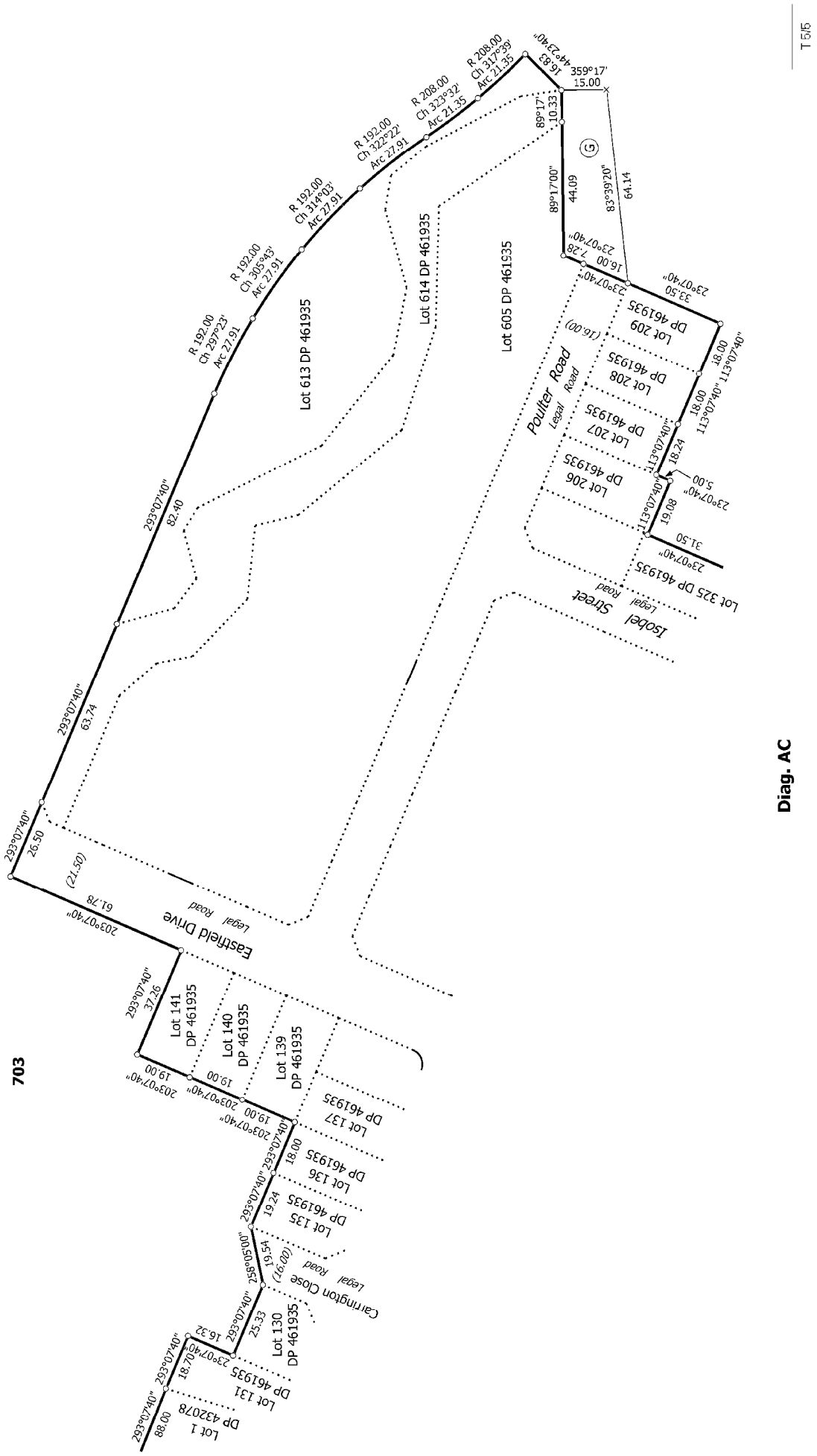
T 415

Title Plan
LT 482481
DRAFT

Surveyor: Kevin Martin Hayes
Firm: Davie Lovell-Smith Ltd

Lots 73 to 80, 104 to 118, 608, 703 and 817 being subdivision of Lot 703 DP 476690

Land District: Canterbury
Digitally Generated Plan
Generated on: 20/03/2015 06:55:44 Page 7 of 8



Diag. AC

T 5/15

Land District: Canterbury	Surveyor: Kevin Martin Hayes Firm: Davis Lovell-Smith Ltd	Title Plan LT 482481 DRAFT
<p>Lots 73 to 80, 104 to 118, 608, 703 and 817 being subdivision of Lot 703 DP 476690</p>		
<p>Digitally Generated Plan Generated on: 20/03/2015 06:55am Page 8 of 8</p>		